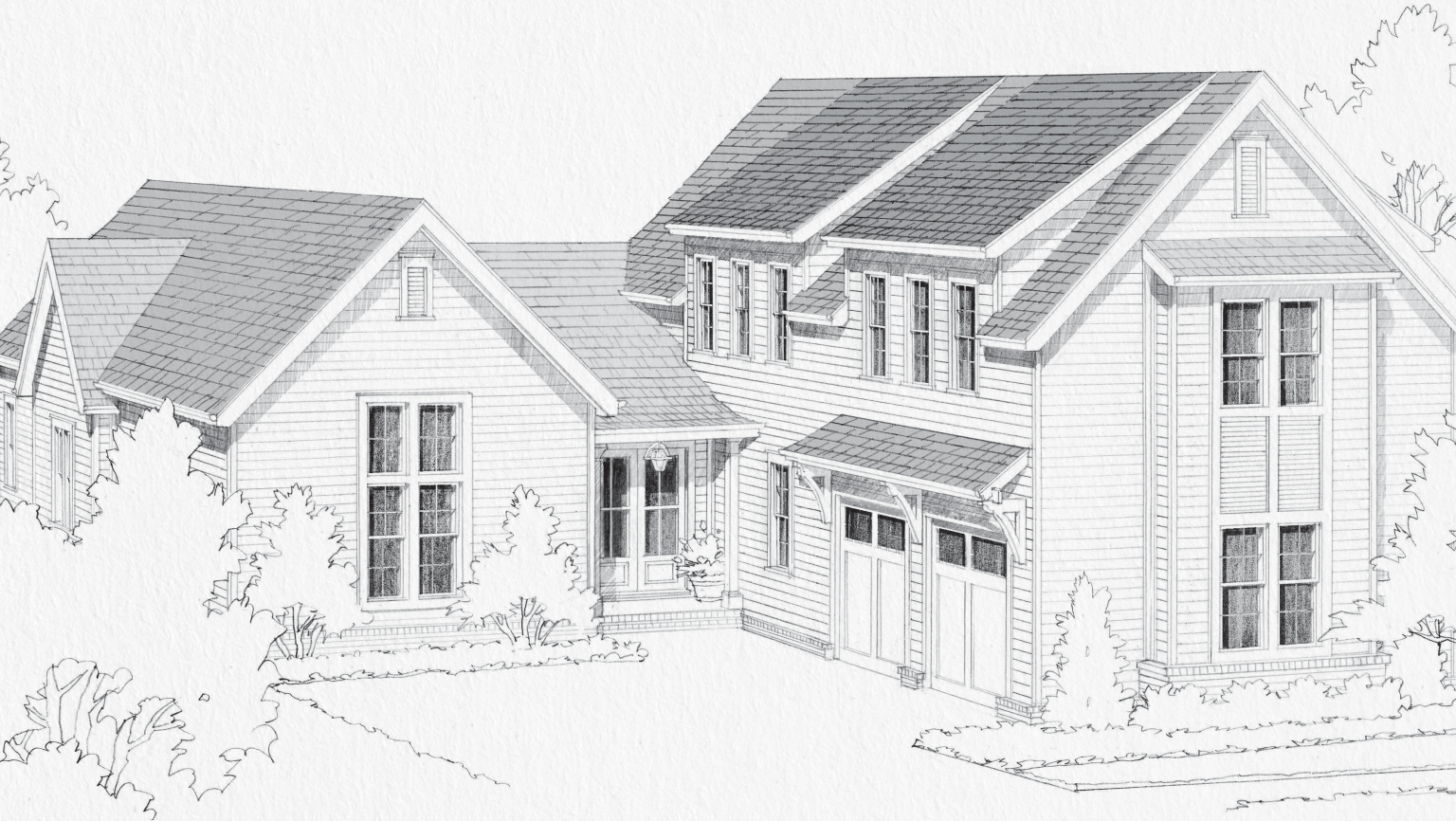




MAEBRY

Homesite 1



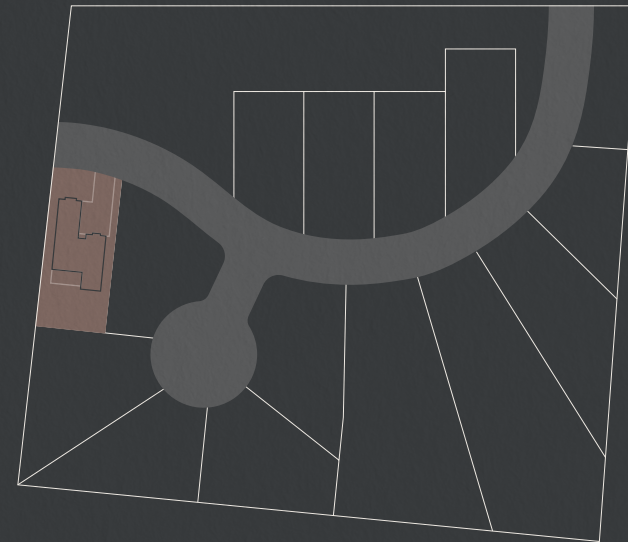
Homesite 1

0.28-acre lot

Approx. 4,000 sq. ft.

4 Bedrooms | 4.5 Bathrooms

Available from June 2025



Main Level

Step into a Grand Foyer that flows seamlessly out to walk-out patio & backyard, perfect for year-round entertaining. The main level features two spacious bedrooms, including a stunning owner's suite with vaulted ceilings, a large walk-in closet, & a soaking tub — a true retreat at the end of the day. *It also features:*

Expansive open-concept kitchen, dining, & living area with a striking fireplace

Spacious laundry room with additional cabinetry for extra storage, plus built-in cubbies in the adjacent Mud Room

High-end KitchenAid appliances, double ovens & 36" Kohler kitchen sink

Quartz & stone countertops throughout

Walk-in pantry

Custom cabinetry & built-in shelving, featured throughout the home

Spacious two-car garage

Upper Level

Discover flexible living on the second floor, where two bedrooms boast ensuite baths & walk-in closets. A cozy reading room doubles as a perfect study area or private office. Topped off by a spacious bonus room, there's ample room for work, play, or relaxation.

Main Level



Upper Level



Contact us today to explore how you can make Maebry your new home.

CHRIS FUMIA | 615-593-7117

CRYE-LEIKE OFFICE | 615-650-7447

INFO@MAEBRYSRINGHILL.COM

MAEBRYSRINGHILL.COM

All dimensions, square footages, exterior elevations, interior renderings and floor plans are approximate and subject to change without notice at the builder's discretion. The information provided in this brochure is for illustrative purposes only and may not reflect the final details of the homes.



DEVELOPED BY GREYDON HOMES

