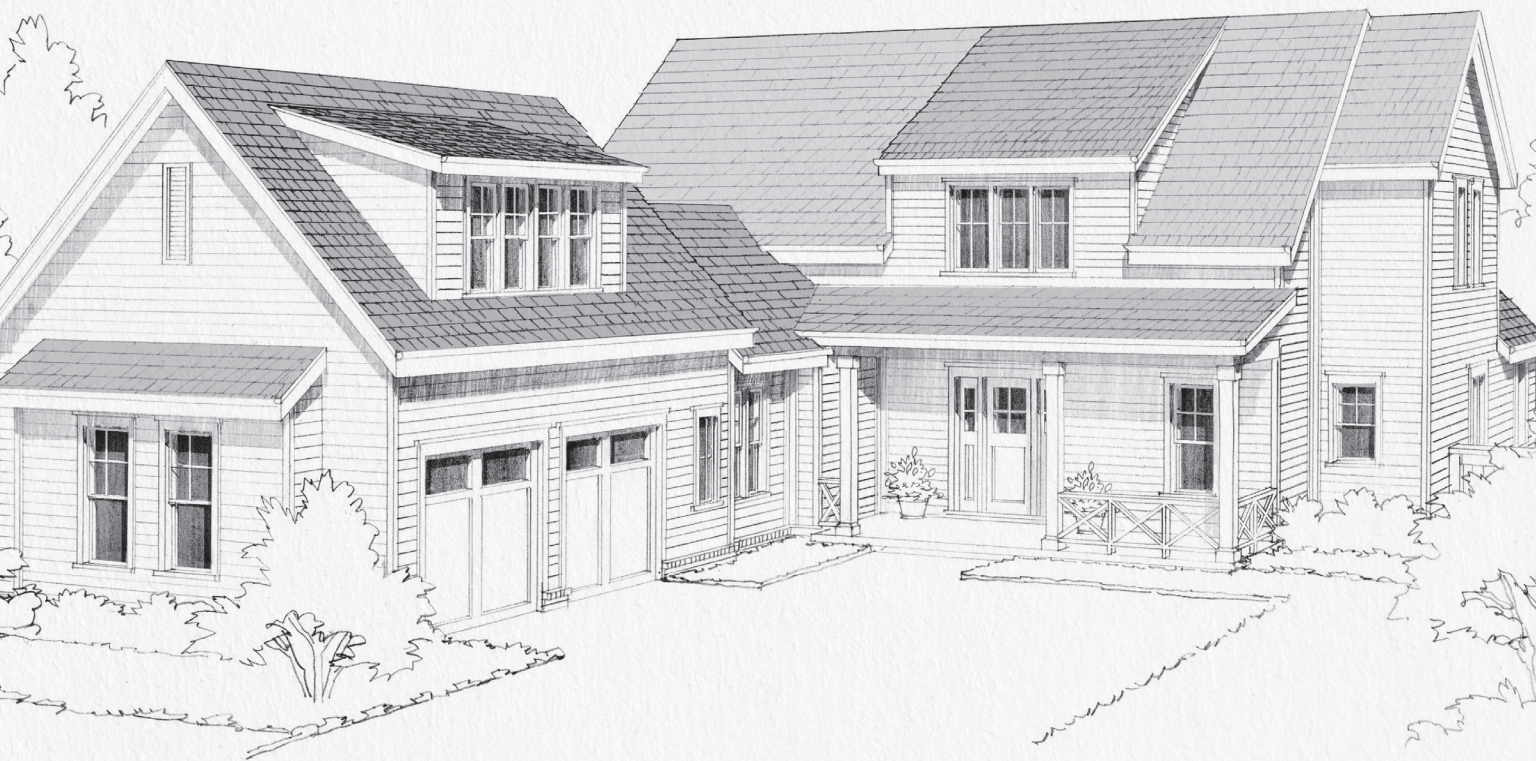




M A E B R Y

Homesite 14



Homesite 14

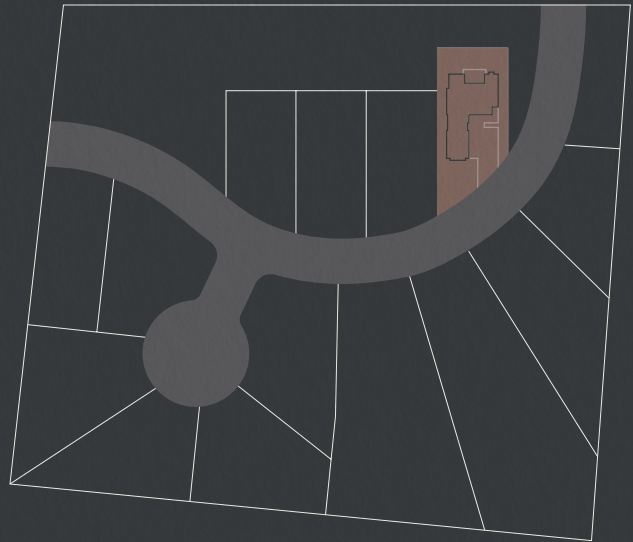
0.25-acre lot

Approx. 4,000 sq. ft.

4 Bedrooms | 4 Bathrooms +

(2) 1/2 Baths

Available from June 2025



Main Level

The main level features three spacious bedrooms, including a stunning owner's suite with vaulted ceilings, a large walk-in closet, & a soaking tub — a true retreat at the end of the day. The expansive living area flows seamlessly to a walk-out patio & backyard, perfect for year-round entertaining. *It also features:*

Cozy dining room with a built-in fireplace & vaulted ceiling

Spacious laundry room with additional cabinetry for extra storage, plus built-in cubbies in the adjacent Mud Room

High-end KitchenAid appliances, double ovens & 36" Kohler kitchen sink

Quartz & stone countertops throughout

Walk-in pantry

Custom cabinetry & built-in shelving, featured throughout the home

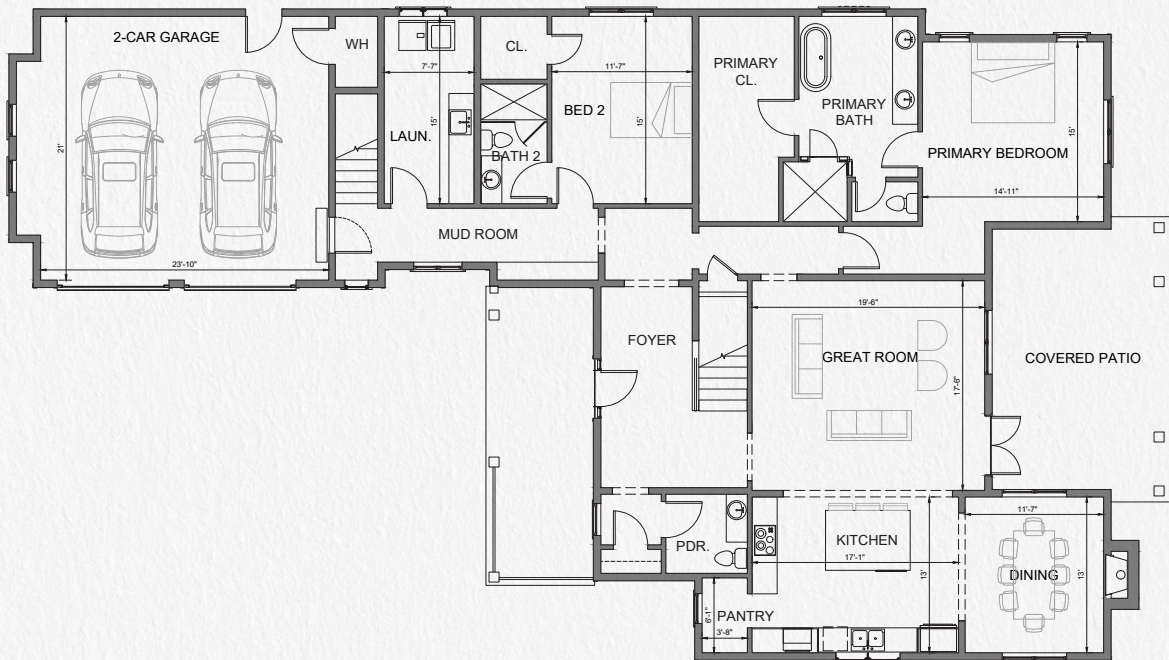
Spacious two-car garage

Upper Level

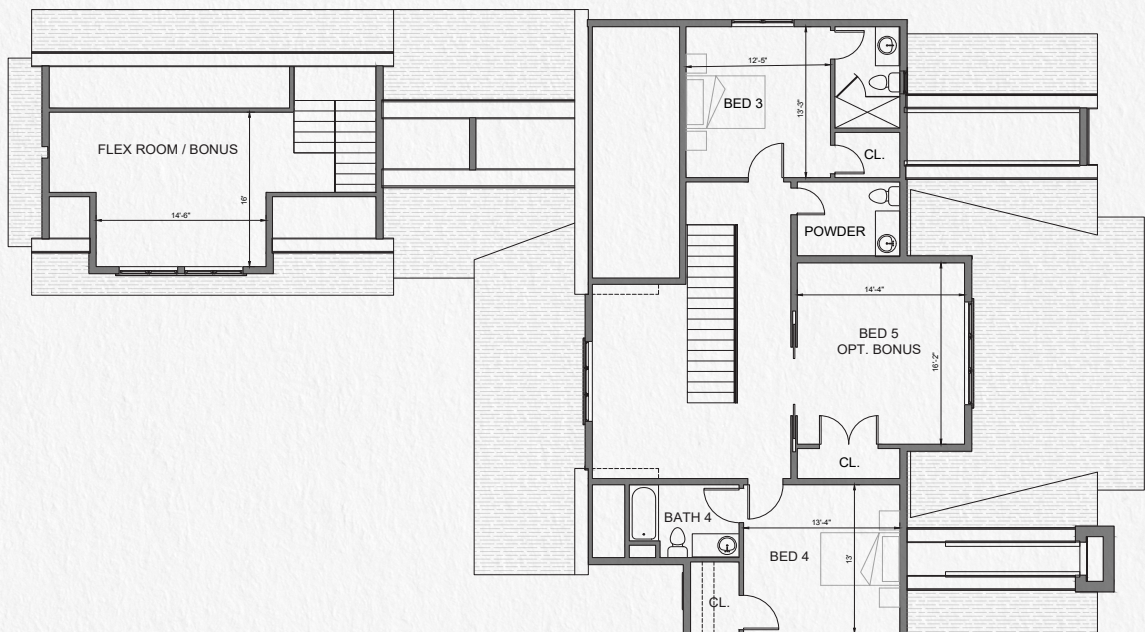
This home offers two staircases, providing distinct living & entertainment areas. The main upper-level features 2 bedrooms, an open retreat at the stairs and a large bonus room that can be flexibly configured. The ensuite upper-level bathrooms are finished with premium fixtures, stone, & tile throughout.

Additionally, there is a private loft above the garage — ideal for a studio, home office, gym, bonus room, or an additional guest suite. Whichever suits your lifestyle!

Main Level



Upper Level



Contact us today to explore how you can make Maebry your new home.

CHRIS FUMIA | 615-593-7117
CRYE-LEIKE OFFICE | 615-650-7447
INFO@MAEBRYSRINGHILL.COM
MAEBRYSRINGHILL.COM

All dimensions, square footages, exterior elevations, interior renderings and floor plans are approximate and subject to change without notice at the builder's discretion. The information provided in this brochure is for illustrative purposes only and may not reflect the final details of the homes.



DEVELOPED BY GREYDON HOMES

