



**MAEBRY**

Homesite 10





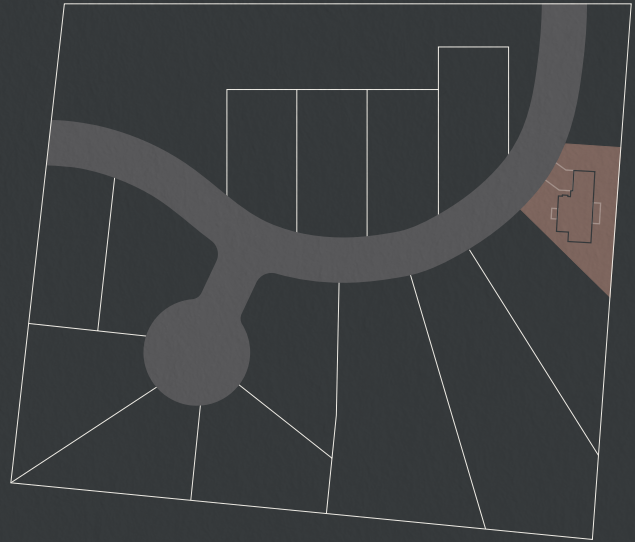
# Homesite 10

0.24-acre lot

Approx. 3,300 sq. ft.

4 Bedrooms | 3.5 Bathrooms

*Available from June 2025*



## Main Level

Experience colonial charm at its finest & enter through a cozy drawing room anchored by a warm fireplace. Walk into an expansive living & dining area that flows seamlessly to a walk-out patio & backyard, ideal for year-round entertaining. *It also features:*

Spacious guest suite with an ensuite bath & large walk-in closet

Convenient mud room/drop zone with built-in cubbies

High-end KitchenAid appliances, 36" oven range & 36" Kohler kitchen sink

Quartz & stone countertops throughout

Walk-in pantry

Custom cabinetry & built-in shelving, featured throughout the home

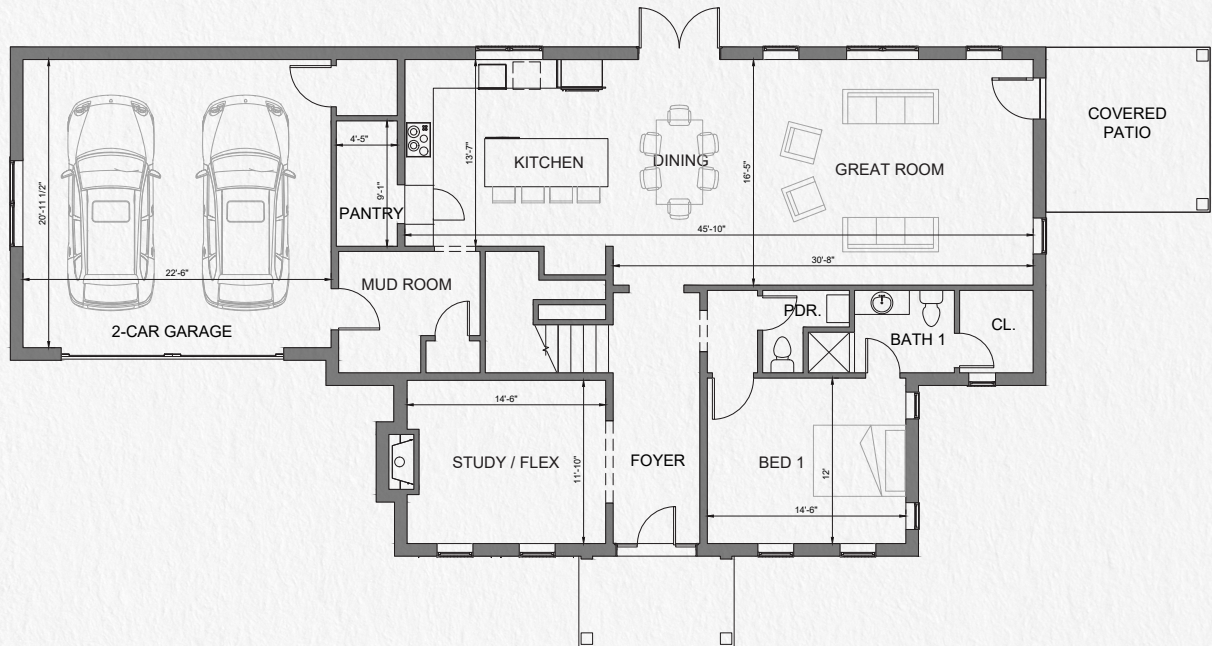
Spacious two-car garage

## Upper Level

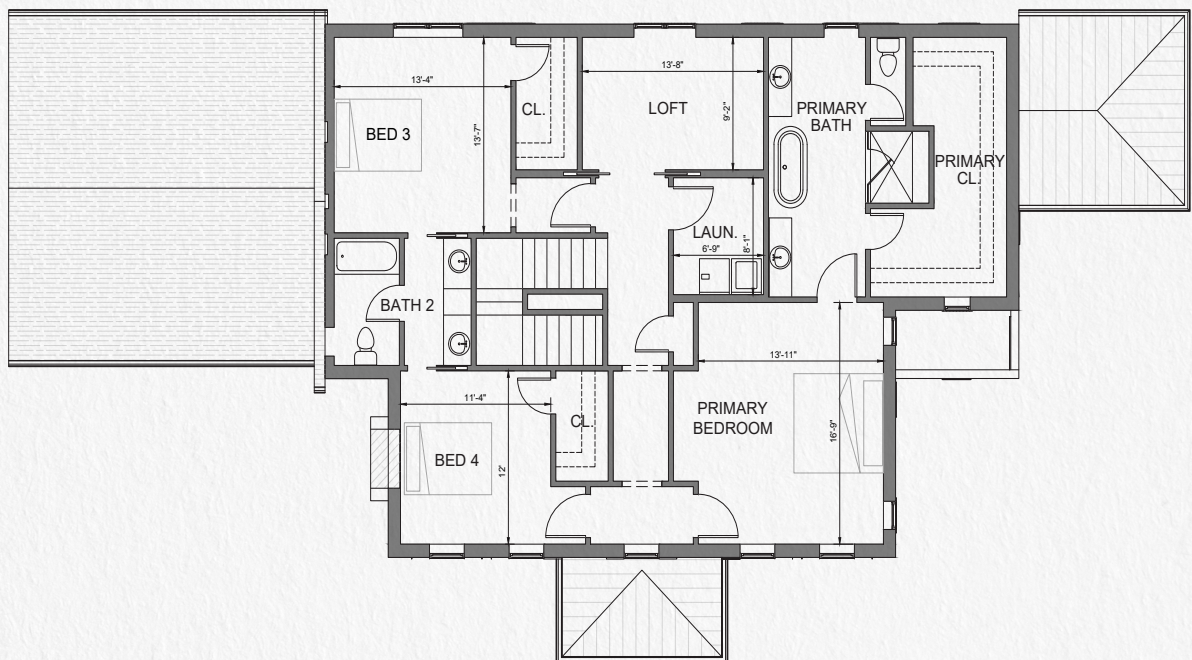
Journey upstairs & discover a generously sized owner's suite joined by two additional bedrooms, a convenient laundry area, & a versatile bonus room — perfect for work, play, or relaxation. Each ensuite bathroom boasts designer fixtures, further elevated by luxurious stone & tile finishes. Plenty of built-in storage ensures a streamlined & stress-free living experience.



## Main Level



## Upper Level



Contact us today to explore how you  
can make Maebry your new home.

**CHRIS FUMIA** | 615-593-7117  
**CRYE-LEIKE OFFICE** | 615-650-7447  
**INFO@MAEBRYSRINGHILL.COM**  
**MAEBRYSRINGHILL.COM**

All dimensions, square footages, exterior elevations, interior renderings and floor plans are approximate and subject to change without notice at the builder's discretion. The information provided in this brochure is for illustrative purposes only and may not reflect the final details of the homes.





DEVELOPED BY GREYDON HOMES

